

eProsima Fast RPC

Installation Manual
Version 0.3.3



The Middleware Experts
eProsima © 2014



eProsima

Proyectos y Sistemas de Mantenimiento SL

Ronda del poniente 16 – Bajo K

28760 Tres Cantos Madrid

Tel: + 34 91 804 34 48

info@eProsima.com – www.eProsima.com

Trademarks

eProsima is a trademark of *Proyectos y Sistemas de Mantenimiento SL*. All other trademarks used in this document are the property of their respective owners.

License

eProsima Fast RPC is licensed under the terms described in the `FASTRPC_LICENSE` file included in this distribution.

Technical Support

- Phone: +34 91 804 34 48
- Email: support@eProsima.com

Table of Contents

eProxima Fast RPC.....	1
1 Basic Requirements.....	4
1.1 Windows 7 32-bit and 64-bit.....	4
1.1.1 Visual C++ 2010 Redistributable package installation.....	4
1.2 Fedora 32-bit and 64-bit.....	4
1.2.1 Boost.....	4
1.3 Other Linux distributions.....	4
1.3.1 Boost.....	4
2 Installation.....	5
2.1 Windows 7 32-bit and 64-bit.....	5
2.2 Fedora 32-bit and 64-bit.....	6
2.3 Other Linux distribution 32-bit and 64-bit.....	7

1 Basic Requirements

This section describes how to install the basic requirements of *eProxima Fast RPC*.

1.1 *Windows 7 32-bit and 64-bit*

1.1.1 Visual C++ 2010 Redistributable package installation

eProxima Fast RPC requires Visual C++ Redistributable package. This distribution checks if it is present in the system. If the package is not present, this distribution prompts the user to install it.

1.2 *Fedora 32-bit and 64-bit*

1.2.1 Boost

eProxima Fast RPC uses Boost libraries. Install them using the Fedora package manager.

```
yum install boost-date-time boost-chrono boost-system boost-thread
```

1.3 *Other Linux distributions*

1.3.1 Boost

eProxima Fast RPC uses Boost libraries. Install them using the corresponding package manager.

2 Installation

This document describes how to install *eProxima Fast RPC* in several operating systems. Select your operating system and follow the steps.

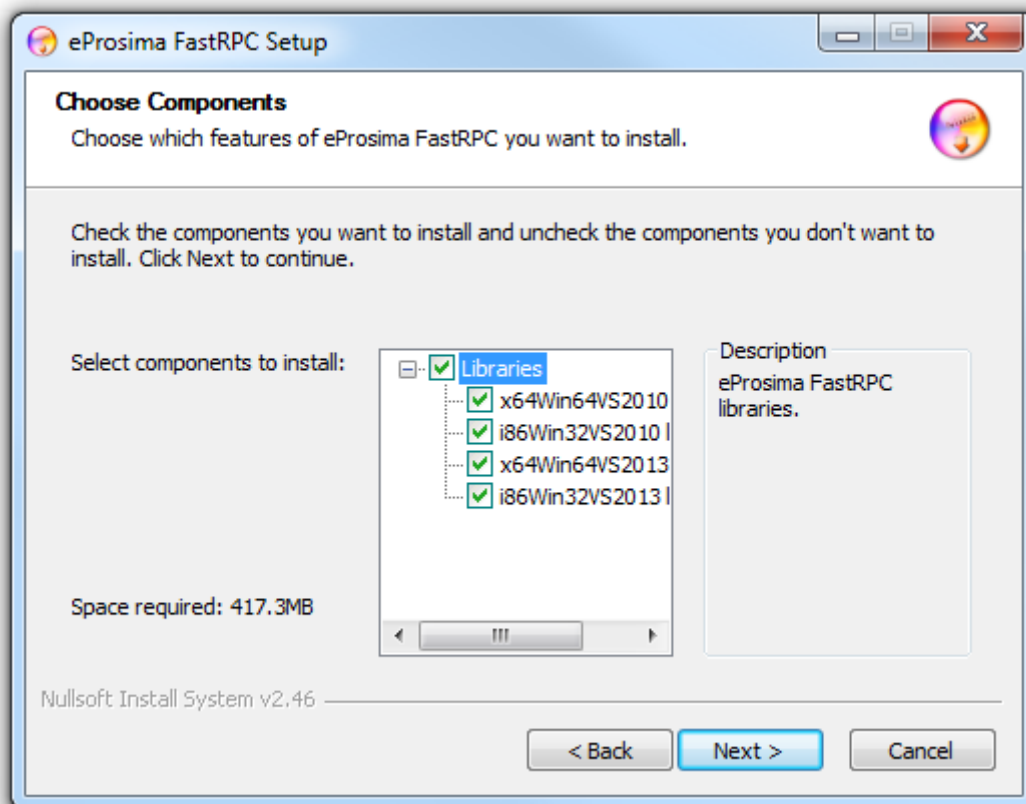
2.1 Windows 7 32-bit and 64-bit

Download the installation package for your system.

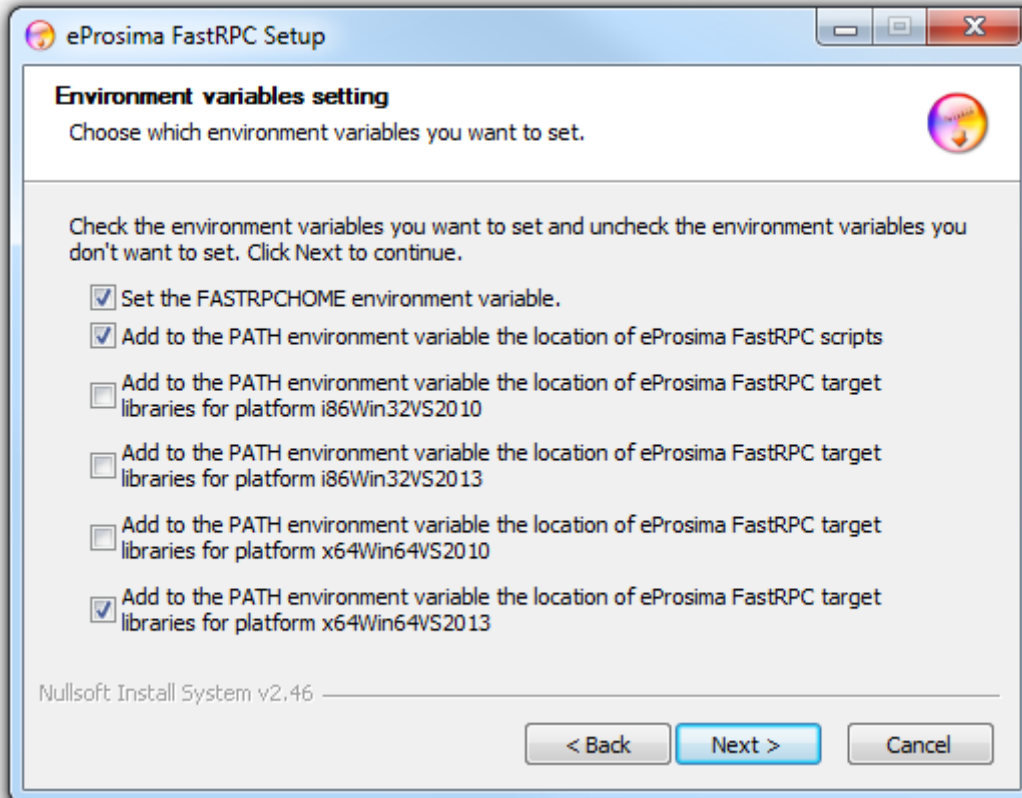
eProxima_FastRPC-0.3.3-Windows.exe

Execute the installer and follow the instructions. You will be asked for some basic information, such as the installation location or the Start Menu folder.

You should make sure that at least one component is selected in the *Choose Components* step:



Once the main components have been selected click *Next*. Another page named *Environment variable setting* will be shown.



It is recommended to set the environment variable `FASTRPCHOME` and to make it point to the *eProxima Fast RPC* installation folder. Make sure this option is selected in the *Environment variable setting* step.

It is also convenient to append the *fastrpcgen* executable location directory to the `PATH` environment variable of the system. Make sure this option is selected in the *Environment variable setting* step.

The serialization library should also be accessible for your system. The installer offers the possibility of appending the location of the libraries you selected to install to the `PATH` environment variable. Make sure this option is selected in the *Environment variable setting* step.

2.2 Fedora 32-bit and 64-bit

Download the installation packages for your system.

```
eProxima_FastRPC-0.3.3-Fedora20.tar.gz
```

Extract its content.

Install the *eProxima Fast RPC* repository with one of these commands, depending on your operating system architecture. These commands install *eProxima Fast RPC* libraries. The headers will be installed in `/usr/include/fastrpc` and the libraries in `/usr/lib64` (or `/usr/lib` if the library is installed in a 32-bit OS). They also install the *fastrpcgen.sh* script in `/usr/bin`, the examples in `/usr/share/fastrpc` and the documentation in `/usr/share/doc/fastrpc`.

```
yum localinstall i686/fastcdr-0.2.1-1.fc20.i686.rpm
yum localinstall i686/fastrpc-0.3.3-1.fc20.i686.rpm
```

```
yum localinstall x86_64/fastcdr-0.2.1-1.fc20.x86_64.rpm
yum localinstall x86_64/fastrpc-0.3.3-1.fc20.x86_64.rpm
```

2.3 Other Linux distribution 32-bit and 64-bit

Download the installation packages for your system.

```
fastcdr_0.2.1.tar.gz
eProsima_FastRPC-0.3.3-Linux.tar.gz
```

Extract its content. First install the *eProsima FastCdr* library needed by *eProsima FastRPC*. For 32-bit machines:

```
$ cd fastcdr; ./configure --libdir=/usr/lib; make; make install
```

For 64-bit machines:

```
$ cd fastcdr; ./configure --libdir=/usr/lib64; make; make install
```

Now, install the *eProsima FastRPC* software. For 32-bit machines:

```
$ cd fastrpc; ./configure --libdir=/usr/lib; make; make install
```

For 64-bit machines:

```
$ cd fastrpc; ./configure --libdir=/usr/lib64; make; make install
```